

Patient Case Report

Vertise™ Flow

Self-Adhering Composite

Prof. Luca Giachetti, MD, DMD, MSc
Department of Public Health - Dentistry, University of Florence, Italy

A 56-year-old female patient shows cusp abrasion and chipping of the mesial marginal ridge on the upper right second molar (Fig. 1).



Fig. 1

Isolation with OptiDam™ rubber dam is performed and the dam is stabilized with the SoftClamp™ universal clamp system. Three small occlusal cavities and interruption of continuity of the mesial marginal ridge are highlighted (Fig. 2). The decalcified dentine is removed with stainless steel burs mounted on a contra-angle handpiece and the preparation margins are finished with extra-fine grain diamond

burs. After the preparation is finalized, an abundant rinsing is performed with air/water spray at full pressure for about 5 seconds. Then a Blue Adapt™ sectional matrix is placed (Fig. 3).



Fig. 2



Fig. 3

The self-adhering composite material Vertise™ Flow, shade A3, is applied into the preparation site with the supplied applicator tip (Figs. 4-6) and brushed in a thin layer (<0.5 mm) on enamel and dentine for 20 seconds, using the supplied brush (Figs. 7-8). The thinned material (Fig. 9) is cured for 20 seconds (DEMI™ LED light).



Fig. 4



Fig. 5



Fig. 6



Fig. 7



Fig. 8



Fig. 9

A new layer of Vertise™ Flow completes the filling (Figs. 10-11).

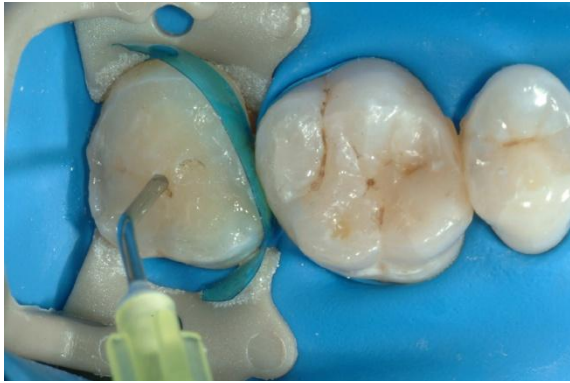


Fig. 10

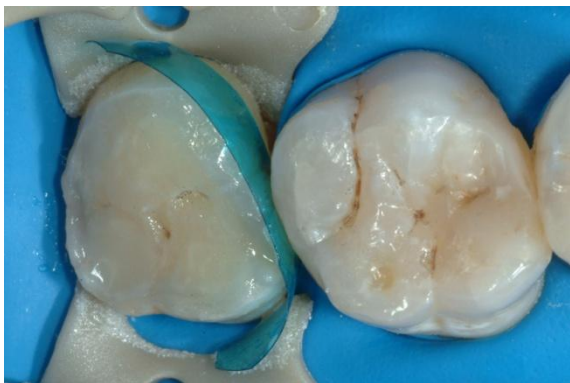


Fig. 11

For the finishing and polishing of the occlusal surfaces, Gloss^{PLUS} and HiLuster^{PLUS} diamond impregnated silicone polishers are used. To refine the marginal ridge decreasing grains of OptiDisc[®] are used (Fig. 12).



Fig. 12

The final polishing is carried out with OptiShine™ brushes (Figs. 13-14).

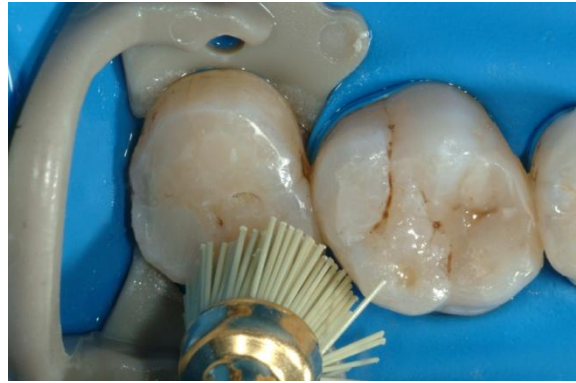


Fig. 13



Fig. 14

After removing the rubber dam, anatomical and functional shapes are controlled and retouched areas are again polished (Fig. 15).



Fig. 15